

Integrated video surveillance from the experts

Embedded VMS software from Milestone on Business-class NETGEAR ReadyNAS



MOST SCALABLE SOLUTION

Highest storage capacity ranging from 2 to 60 bays and support of 1 to 100 HD cameras with easy coverage expansion by the addition of a NETGEAR PoE switch for distant deployment.



TOTAL PROTECTION OF YOUR ASSETS

Experience the best data retention with ReadyNAS 5 levels of data protection and hybrid remote NAS and Cloud backup.



WORLD-CLASS SOLUTION & SUPPORT

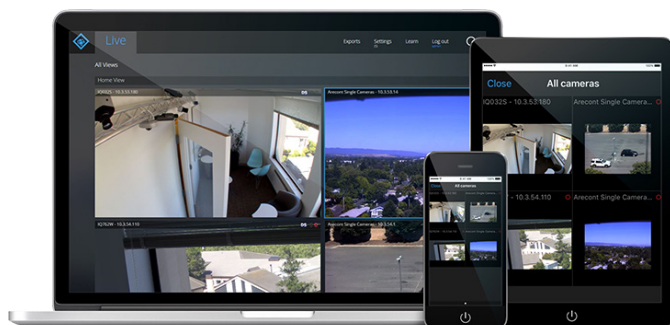
40 years of combined surveillance software and networking experience. One stop 5-year support.

ReadyNAS, Your data. Your business. Protected.

- Multiple hardware platforms to choose from - from 2 to 60 Bays, desktop or rackmount
- Industry's highest standard for video data protection, protect against physical, mechanical, virus/malware, human and system level errors - 5 levels of data protection
- Runs Milestone Arcus on ReadyNAS as an app, while supporting the full ReadyNAS feature set - data backup, file sharing, data protection, and more

Milestone Arcus Business-grade surveillance

- Support thousands of ONVIF compatible wired and wireless cameras
- Web browser for management, live view, and archive playback
- Multi-zone, configurable sensitivity motion trigger
- Set recording schedule, and email notifications
- App remote viewing, and instant video capture & push
- Easy to install and manage
- Run on all Business-class ReadyNAS



ANYWHERE VIEWING WITH MOBILE APP

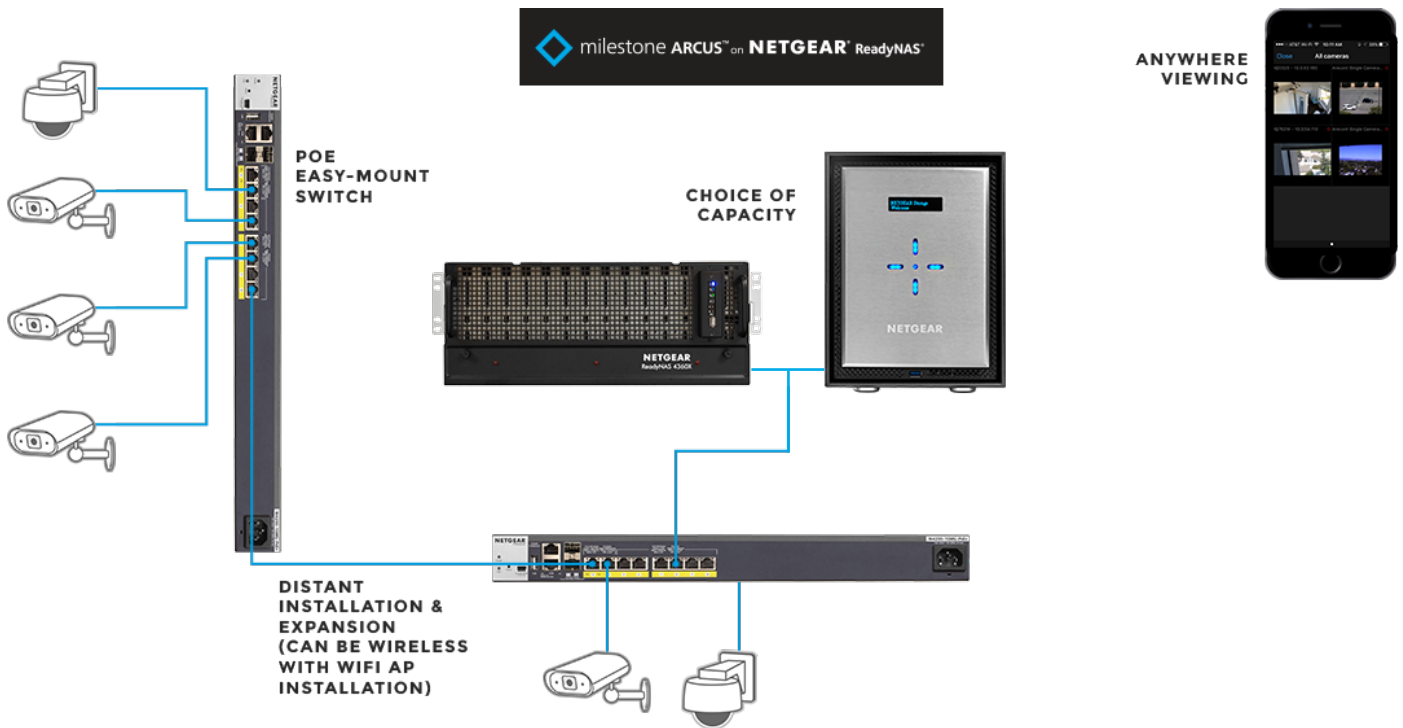
Remote access and viewing plus instantaneous video capture and push to ReadyNAS

Capable of managing multiple surveillance sites with multiple ReadyNAS video servers

LIVE VIEW

Easy-to-use dashboard to view and manage cameras with time-stamped archiving

Easy installation and scalability with Milestone Arcus on ReadyNAS



Multiple Business-class ReadyNAS models to choose from

| BUSINESS CLASS READYNAS | RN420 | RN520 | RN620 | RR2000 | RR3000/4000 |
|---|---|--|---------------------|------------------|---|
| Models | RN422 RN424 RN426 RN428 | RN524X RN526X RN528X | RN626X RN628X | RR2304 | RN3138 RR3312 RR4312X RR4360X |
| Drive Bays | 2/4/6/8 | 4/6/8 | 6/8 | 4/12 | 4/12/60 |
| Network Interface | RN422/424: 2x GbE RN426/428: 4x GbE | RN524X: 10 GbE + GbE RN526X/528X: 2x 10 GbE | 2x GbX 2x 10 GbE | RR2304: 2xGbE | RN3138/RR3312: 4x GbE RR4312X/4360X: 2x 10 GbE, 4x GbE |
| Typical Number of Cameras | 8 to 40 | 16 to 60 | 72 to 100 | 8 to 40 | 40 to 100 |
| System Requirements for the Solution | <ul style="list-style-type: none"> • A Business-class ReadyNAS • ReadyNAS OS 6.8 or later • Free download-able Milestone Arcus on ReadyNAS app from ReadyNAS app store (Admin UI) • Camera licenses purchased separately <ul style="list-style-type: none"> - RNVMSMA1-10000S, Milestone Arcus on ReadyNAS, 1 camera license - RNVMSMA4-10000S, Milestone Arcus on ReadyNAS, 4 camera licenses - RNVMSMA8-10000S, Milestone Arcus on ReadyNAS, 8 camera licenses • Two 60-day free trial camera licenses | | | | |